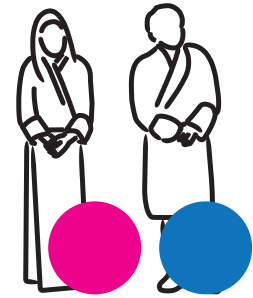


# FINANCIAL INCLUSION INDICATORS 2021



**QUARTER 1**  
as of 31st March 2021



**75.91%**

of Bhutanese have a **savings account**

● 47.11% ● 52.89%



**21.08%**

of Bhutanese have access to **loans**

● 42.65% ● 57.35%



**24.24%**

of Bhutanese have an **insurance policy**

● 40.39% ● 59.61%



**19.47%**

of Bhutanese have **life insurance**

● 43.67% ● 56.33%



**5.97%**

of Bhutanese have **non-life insurance**

● 29.43% ● 70.57%



**12.04%**

of Bhutanese are **Pension contributors**

● 27.91% ● 72.09%



**18.49%**

of Bhutanese have access to **e-money**

● 24.46% ● 75.54%



**10.60%**

of Bhutanese have **shares**